



# THE EVOLUTION OF EA FUNCTION

EA INTERNAL

EA EXTERNAL & INFLUENCE

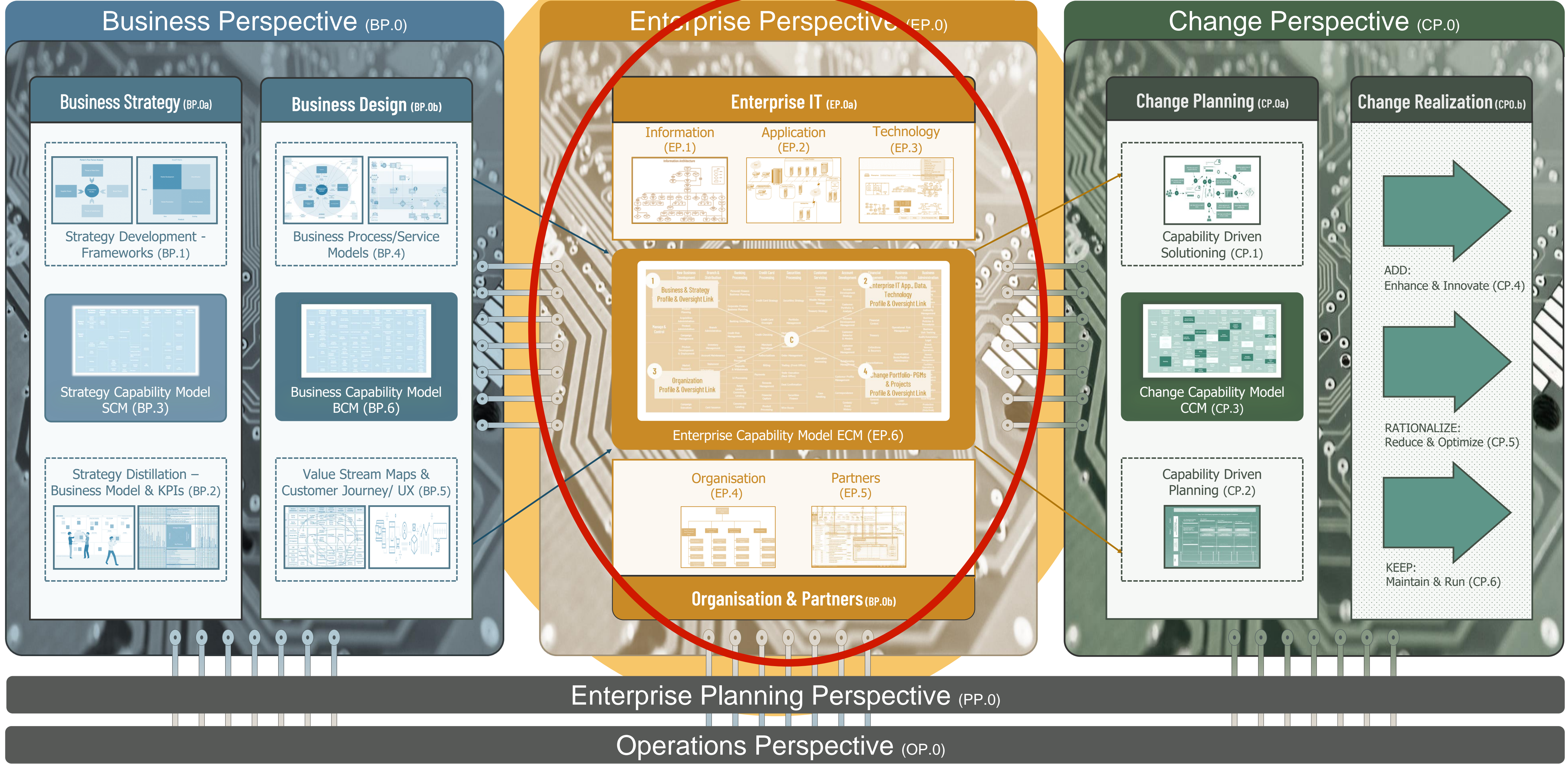
ENTERPRISE DIGITAL TRANSFORMATION  
WITH EPERSPECTIVES

*ARSALAN N. RAD  
DISTINGUISHED ENTERPRISE &  
BUSINESS ARCHITECT  
(THE OPEN GROUP)*



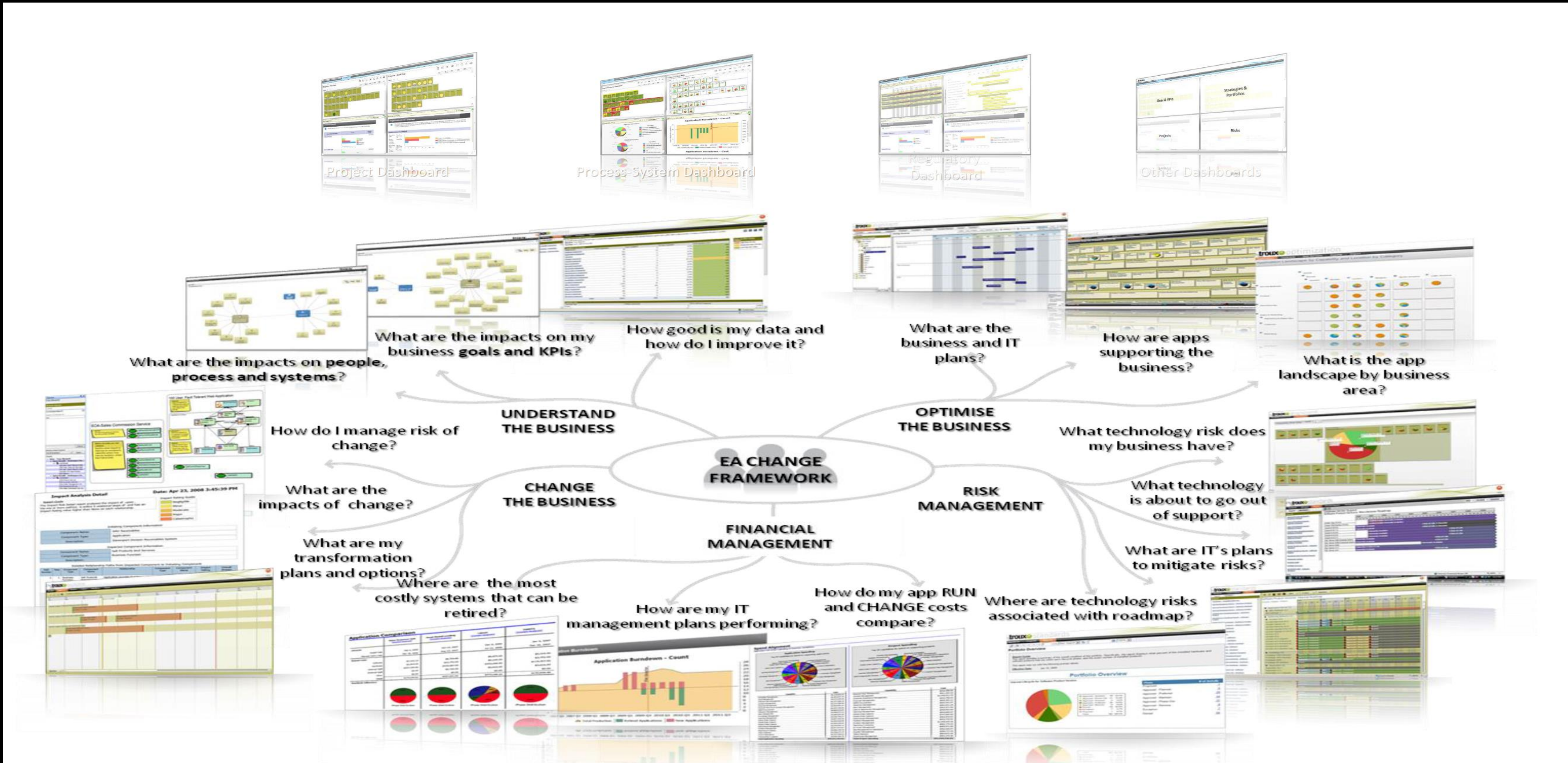


# EPERSPECTIVES: DIGITAL ENTERPRISE – BASELINED, SIMPLIFIED, AND UNIFIED





# EA Function: Command & Control Center with Unified Full Enterprise Oversight

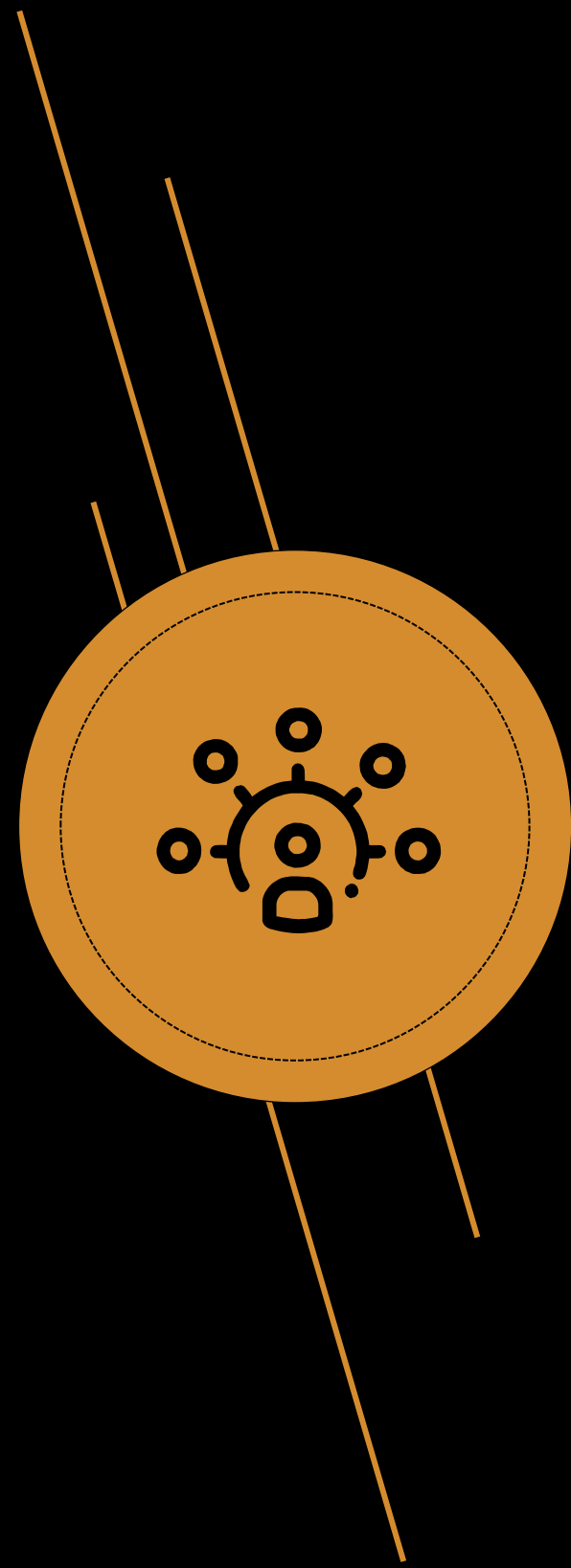




# EA Function: 2 Key aspects in focus : Internal vs. External

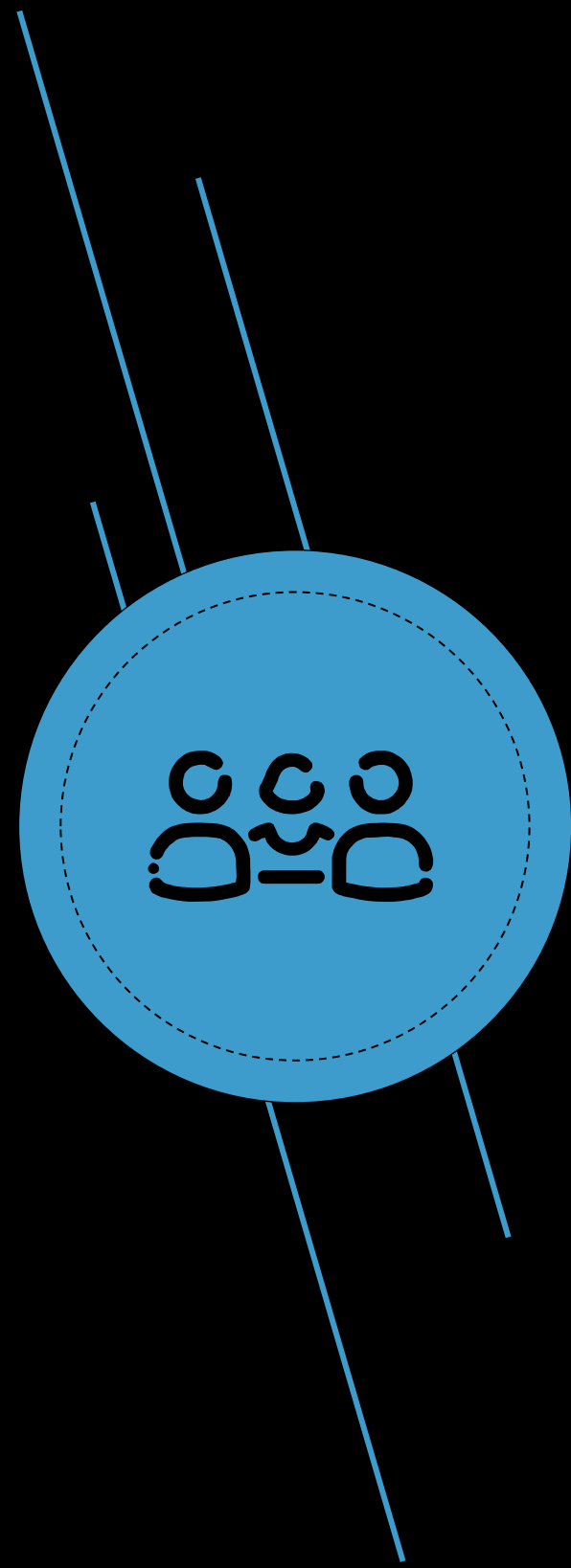
EA Internal	EA External
Re-shaping EA Function to become a Best-Practice led Architecture Function	<p>Holistic E2E Architecture from Business Strategy to IT Implementation- Making EA Function the Command &amp; Control Center (CCC) for Business and IT</p> <p>Putting it to actual work and leveraging it in actual practice:</p> <p>How EA Function can take a highly active role in identifying issues within the current initiatives, and make recommendations and take actions to assist in putting these Programs back on the right track</p>

# Target state: EA function internal (indicative)



- EA Function guiding and leading by Applying Best-Practice Enterprise and Solution Architecture
- Well-defined services published as Service Catalogue
- Well functioning Demand Management, Governance, etc.
- Interaction or request for Service directed to EA Function, and routed by EA Function to Architectural Capabilities required
- Clarity in responsibility and accountability for various Architect roles
- Optimized Capacity
- Qualification Process to ensure correct and proper initiation of delivery
- Information/Data (and Security) Architecture seamlessly integrated
- **Fully Implemented in EA Tooling**
- .....

# Target state: EA function external holistic(indicative)



- Architecture-leading by following a Best practice holistic e2e framework
- Reputation and reliance to enable and empower Transformation Programs
- Business Change & Transformation Programs devised, architected, planned, and harmonized in complementary fashion at “Holistic Business Level”
- Ability to provide full traceability e2e from Business Strategy to IT implementation, hence to be seen as a “Command & Control Center” for Business and IT, where Obtaining reports from Programs is standard, with ability monitor and measure progress highly difficult
- Governance model that reflects the e2e picture accordingly
- Clear process of intake from EA (EA Function) to Solution Delivery
- QA Quality checkpoints milestones for solution delivery to assure of delivery quality
- **Fully Implemented in EA Tooling**
- ...

# EA Function Influence

- Simplification of IT landscape, and Business to IT flow
- All Programs Best Practice Enterprise Architecture-adherent
- Programs re-adjusted to be driven from “holistic e2e ” POV- One baseline for scoping (i.e. Business Capability Model)
- Business Change & Transformation Programs devised, architected, planned, and harmonized in complementary fashion at holistic “Holistic Business Level”
- Driven from “holistic e2e Solutions” POV
- Business requirements (and NFR’s) for key Business Capabilities such as “Billing” clear
- Mutual integrity in scope intact across Programs, thus avoiding overlapping scope, or conflicting choices
- Clarity in responsibilities and accountability
- Programs traceable from defined Business Strategy to implementation plans, Epics, etc., enabling full-fledged KPI-adherent reporting with full traceability
- Fully Implemented in EA Tooling
- ...



# High Level Path

